

WHEEL SENTRY®

Fitting Instructions for 8 stud wheels



1. Before fitting Wheel Sentry® ensure all wheel fixings are in good condition and correctly torqued using a calibrated torque wrench.



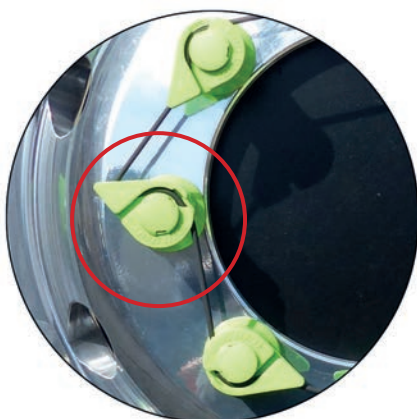
2. Fit Wheel Sentry® indicators to your wheel nuts – a simple push fit by hand. For 8 stud wheels they should be fitted facing each other in pairs as shown.



3. Apply Viton band to interlink all Wheel Sentry® indicators, making sure that it's located within the s-shaped channel as shown.



4. Check that the Viton band is linking smoothly and all indicators are in line.



5. After a journey, check indicators for any possible loosening.

6. If there has been any loosening, remove Viton band and indicator from loosened nut, tighten and re-torque the nut and re-apply Wheel Sentry® for your next journey.

