

# WHEEL SENTRY®

## Fitting Instructions for 10 stud wheels



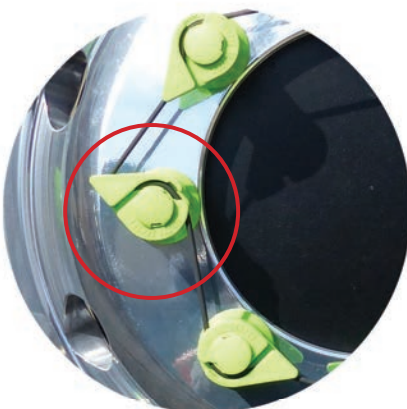
**1.** Before fitting Wheel Sentry® ensure all wheel fixings are in good condition and correctly torqued using a calibrated torque wrench.

**2.** Fit Wheel Sentry® indicators to your wheel nuts – a simple push fit by hand. For 10 stud wheels they should be fitted facing each other in pairs as shown.



**3.** Apply Viton band to interlink all Wheel Sentry® indicators, making sure that it's located within the s-shaped channel as shown.

**4.** Check that the Viton band is linking smoothly and all indicators are in line.



**5.** After a journey, check indicators for any possible loosening.

**6.** If there has been any loosening, remove Viton band and indicator from loosened nut, tighten and re-torque the nut and re-apply Wheel Sentry® for your next journey.

